



Primary Care Networks

This year the government have introduced Primary Care Networks into General Practice. Wyvern Health Partnership has been confirmed that it can work as a Primary Care Network, which is great news as we are already a few years down the line towards working together. The government is changing how practices work and encouraging joint working and they are supporting this by funding additional roles within GP practices.

In 2019 – 20 they are fully funding a Social Prescriber and funding 70% of a Clinical Pharmacist role.

The rationale behind this is to encourage practices to work together and to enable different staff, other than a traditional GP or nurse, to see patients. Primary Care Networks should also help integrate primary care with secondary care (hospitals) and community care.

So what is a Social Prescriber?

The social prescriber role is not totally new to Swindon. Swindon Borough Councils' Live Well team have provided Community Navigators within Swindon GP practices for a number of years. This role is very much about supporting patients who may need more than a traditional GP can provide.

They offer 1:1 support, within the practice or external to the practice to help a patient who may need help with the more social elements of their life, which is often impacting on their health. This could include help with diet, exercise, finances, care packages and isolation and usually they will enable patients to link with community groups, befrienders and local people to continue to support them.

The Social Prescriber role is an extension of the Community Navigator and Wyvern has commissioned Swindon Borough Council to provide this service as they already do so much work in this area.

This will mean that we will have a full time member of the team who will support all 6 practices with additional time for the more social elements of their lives which in turn should impact positively on their health.

So what is a Clinical Pharmacist?

Again many of you will have seen Clinical Pharmacists within your own practices. The role is there to support GPs and they undertake a number of things including:

- Seeing patients for medication reviews
- Seeing patients in specific clinics such as diabetes
- Aligning medication when a patient is discharged from hospital to ensure that the medication is ready for the patient to request when they need it.
- Supporting GPs with their extensive pharmaceutical knowledge.

So where are with our recruitment?

Currently the Council is recruiting for the Social Prescriber role.

We have interviewed for the Clinical Pharmacist role but have not been successful with this so this is going to be re-advertised.

What happens in future years?

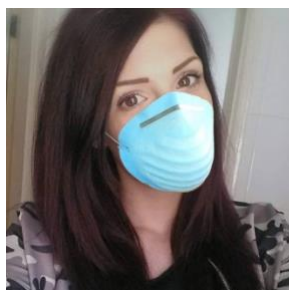
The funding we get will continue next year for these roles and we will also be able to recruit to additional roles such as physiotherapists, physicians' associates and paramedics. Wyvern's Primary Care Network will also be looking at health data across our area to assess the needs of our patients and look at more targeted, proactive support.

The future will be very much about understanding our patients' needs and providing more personal services to support them.

What is going on at Hawthorn Medical Centre?

Coronavirus

If you have travelled from any at risk area or you are concerned that you may have coronavirus then please DO NOT come to the surgery. You must self-isolate at home and phone NHS111.



Walk In Centre Blood Appointments

If you go to Swindon Health Centre to get your blood test done you will be asked if you consent to share with your GP. If you do not consent to sharing then your test results will not come back to the surgery and you will need to follow this up with the Swindon Health Centre.